



**Lewiston Public Works Advisory Commission  
REGULAR MEETING AGENDA  
August 28, 2025 - 12:00 PM  
Bell Building – Second Floor Conference Room – 215 D Street  
Lewiston, Idaho 83501**

Seating will be available on a first-come, first-served basis.

---

**I. CALL TO ORDER**

**II. CITIZEN COMMENTS**

This is an opportunity for citizens to address the Commission on agenda items or other items they wish to bring to the attention of the Commission or Staff. In consideration of others wishing to speak, please limit your remarks to three (3) minutes.

**III. CONSENT AGENDA**

All items on the Consent Agenda are considered routine by the Commission and will be enacted by one motion. There will be no separate discussion on these issues unless a Commissioner so requests, in which case the item will be removed from the Consent Agenda and considered under "Items Moved from the Consent Agenda".

**A. APPROVAL OF MAY 21, 2025 MEETING MINUTES:** - Action Item

**IV. DIRECTOR'S REPORT**

Concise updates on items from previous meetings and notices of upcoming projects, efforts, etc. Questions are permitted but not intended for discussion by, or action from, the commission.

**V. ACTIVE AGENDA**

**A. PROGRESS UPDATE ON PWAC PROJECT #1 - CITY STANDARDS UPDATE:** The City Engineer will provide a progress update on Project #1 - City Standards Update since receiving the Commission's final recommendations on June 26, 2025. - Action Item (Luke Antonich)

**B. EAST LEWISTON NETWORK ANALYSIS (ELNA) STEERING COMMITTEE:** The City has contracted Kittelson & Associates, Inc. to perform a transportation network analysis of East Lewiston developed from input and participation from a steering committee. - Action Item (Luke Antonich)

**VI. ITEMS MOVED FROM THE CONSENT AGENDA** - Action Item

**VII. UNFINISHED & NEW BUSINESS**

**A. COMMISSIONER COMMENTS:** *Comments should not be related to an item currently before the Commission or an item that may come before the Commission in the foreseeable future, and should be limited to comments, not discussion. Council Liaisons should use this time to share comments, if any.* - Action Item

**B. STAFF LIAISON COMMENTS:** *Comments should not be related to an item currently before the*

*Commission or an item that may come before the Commission in the foreseeable future, and should be limited to comments, not discussion. - Action Item*

**VIII. ADJOURNMENT - Action Item**

*The City of Lewiston is committed to providing access and reasonable accommodation in its services, programs, and activities and encourages qualified persons with disabilities to participate. If you anticipate needing any type of accommodation or have questions about the physical access provided at this meeting, please contact Nikki Province, ADA Coordinator, at least forty-eight (48) hours in advance of the meeting at 208-746-3671 x 6211.*

---

The PUBLIC WORKS ADVISORY COMMISSION (PWAC) met in the Bell Building 2nd Floor Meeting Room at 215 “D” Street. Chair Laura Wright called the meeting to order at approximately 12:01 p.m.

Public Works Advisory Commission meetings are recorded live. To view the recording, go to <https://www.youtube.com/watch?v=uJfYIHEAdRQ>

**I. CALL TO ORDER**

*COMMISSIONERS PRESENT:* Chair Laura Wright, Vice-Chair Ryan Rehder, Brent Bourassa

*COMMISSIONERS ABSENT:* Lytonia "LT" Gardee and Kayleigh Philippi

*CITY COUNCIL LIAISONS PRESENT:* Councilor Kathy Schroeder and Councilor Kasse Forsmann

*STAFF MEMBERS PRESENT:* Dustin Johnson, PE, Public Works Director; Luke Antonich, PE, City Engineer; Haley Kelley, Public Works Specialist

**II. CITIZEN COMMENTS**

None.

**III. CONSENT AGENDA**

Chair Wright explained that all items on the Consent Agenda are considered routine by the Commission and will be enacted by one motion. There will be no separate discussion on these issue unless a Commissioner so requests, in which case the item will be removed from the Consent Agenda and considered under “Items Moved From the Consent Agenda.”

Councilor Schroeder and Commissioner Bourassa moved and seconded, respectively, approval of the Consent Agenda. The motion carried 5-0.

**A. APPROVAL OF DECEMBER 18, 2024 MEETING MINUTES: - Action Item**

**IV. DIRECTOR’S REPORT**

Director Johnson provided updates and answered questions on the election results for the Main Street Reconstruction Project; Annual Street Preservation; 12th Street Sidewalk Infill; Airway to Warner, 1/2 Block of Bryden Ave Project; Water Treatment Plant Intake Project; and the Downtown Water Transmission Main Project.

**V. ACTIVE AGENDA**

**A. ELECTION OF OFFICERS: - Action Item**

Luke Antonich, PE, City Engineer, introduced the City’s construction standards and Idaho Standards for Public Works Construction (ISPMC), explaining how they allow the City to establish design requirements and identify non-compliant plans. Mr. Antonich walked through the red lines and notes from City staff and J-U-B Engineers, Inc., encouraging the Commission to reach out with any questions.

Director Johnson said that these standards have been used for years but have not been formally adopted; the project goal is City Council adoption. He welcomes feedback on grammar, spelling, formatting, etc. for members that do not possess a technical background.

Ms. Wright asked if the Parks and Recreation Department (P&R) has standards. Mr. Antonich replied that he is only aware of these standards; P&R outsources engineering services. Ms. Wright asked if the City has a lighting standard; Mr. Antonich said no.

Councilor Forsmann asked if Ms. Wright was asking if P&R collaborated with the City Engineer for standards. Ms. Wright explained that standards were consolidated under one authority in her previous experience. Ms. Forsmann proposed bringing up the topic of standards with Councilor Spicklemire who serves as the liaison for the Parks & Recreation Commission (PRC). Director Johnson said the Facilities Division of P&R is evolving but this topic could be shared with the new P&R Director as they head in the same direction of asset management that Public Works employs. Mr. Antonich said that the standards pertain to public right-of-way whereas most P&R designs do not fall within that category.

Ms. Wright asked if there was a standard for traffic signals. Mr. Johnson said that a specification is in progress. Mr. Antonich added that Public Works has specifications for most of these topics but does not necessarily have drawings. Ms. Wright recommended that the City adds an illumination standard and traffic signal standard in the future.

Mr. Bourassa asked if this is the entirety of the standards in the City right now. Mr. Antonich said that there are some specifications that outline those manufacturers or requirements. Vice-Chair Rehder explained that the standards serve as a supplement to the ISPWC and that most people, contractors included, are not aware of the ISPWC's existence.

**VI. UNFINISHED & NEW BUSINESS**

**A. COMMISSIONER COMMENTS: - Action Item**

Councilor Forsmann thanked Director Johnson and the staff for attending the Main Street Reconstruction Project open houses. Ms. Forsmann would like to see if there are ways to mitigate Lewiston's high accident rate with roadway design in future projects.

Commissioner Bourassa asked if a special meeting would be held for the June deadline for Project #1. Public Works Specialist Kelley said that there was no meeting scheduled and that the assignments given today were to be completed outside of meetings.

**B. STAFF LIAISON COMMENTS: - Action Item**

Director Johnson said that the annual Public Works Expo begins at 9:00 AM on Thursday, May 22<sup>nd</sup> at the Nez Perce County Fairgrounds

**VII. ADJOURNMENT - Action Item**

There being no further business, Councilor Schroeder and Commissioner Bourassa moved and seconded, respectively, to adjourn the meeting. The motion carried 5-0 and the Public Works Advisory Commission adjourned at approximately 12:55 p.m.

RESPECTFULLY SUBMITTED,

\_\_\_\_\_  
Haley Kelley,  
Recording Secretary

\_\_\_\_\_  
Chairperson or Acting Chairperson  
Public Works Advisory Commission

Approved this \_\_\_\_ day of \_\_\_\_\_, 2025



## PUBLIC WORKS ADVISORY COMMISSION MEETING AGENDA ITEM SUMMARY

<p><b>ITEM TITLE</b> Progress Update on PWAC Project #1 - City Standards Update</p>	<p><b>AGENDA NO.</b> V.A. <b>AGENDA DATE:</b> August 28, 2025</p>
<p><b>ITEM SUMMARY (Background, Discussion, Key Points, Recommendations, etc.)</b></p> <p>Public Works is pursuing an update to the City of Lewiston (COL) standard drawings and modifications to the Idaho Standards for Public Works Construction (ISPWC); J-U-B Engineers, Inc. ("J-U-B") was hired to review and make recommendations.</p> <p>The City Engineer introduced this item at the May 21, 2025 meeting and assigned the Public Works Advisory Commission (PWAC) to provide feedback on the standard drawings and modifications to the ISPWC by June 11th; the elected officers were assigned to review and finalize PWAC’s feedback by June 26th.</p> <p>On June 27th, the staff liaison provided PWAC’s feedback to the City Engineer for review. The City Engineer has made a number of revisions to the standards and specifications based on the Commission's feedback and his responses are recorded on the enclosed comment log.</p> <p>The next step is to open the revised standards and specifications for a 30-day public comment period. Staff will then address any comments received before taking the standards and specifications to Council for approval.</p>	
<p><b>BUDGET IMPACT (Identify any or all impacts this proposed action would have on the City budget and/or personnel resources)</b></p> <p>The approval of the updated documents will not have a budgetary impact. Staff time has been used for the review of these documents which is necessary to keep the standards up to date and current with the ever-changing world of construction and construction processes as well as the needs of the City.</p>	
<p><b>ACTION PROPOSED</b></p> <p>Staff is not requesting any action from the Commission but would be happy to address any follow-up questions or comments.</p>	

City website - <a href="#">Construction Standard Drawings</a> , page		Pub. Date	Lewiston City Code	ADA Transition Plan (2020)	Lewiston Transp. Plan (2020)	<a href="#">Parklet Design Standards (2023)</a>	Thain Rd Corridor & Access Study (2024)	PWAC Feedback (6/26/25) <i>Cleaned up for legibility by HKelley; raw docs filed in Project #1 shared drive.</i>	Staff Comments
<b>0 "Upfront"</b>									
A	<a href="#">Disclaimer</a>	2015						??	
B	<a href="#">Table of Contents</a>	Jan. '25						1) Maybe a title and maybe a statement that drawing takes precedent? 2) Update with spec noted by JUB i.e. ISPWC Type 1 crushed Agg.?	1) Added Title. Statement made in contract documents. 2) Added.
C	<a href="#">Inspection Checklist</a>	Sep. '24						1) Do not capitalize the "p" in "Public" at the end of the first paragraph. 2) Does Resolution need to be noted? 3) Newer version of ISPWC June 2025? 4) List or bullet standards?	1) Changed. 2) The resolution will be placed at the front of the stds. 3) Yes. The timing is unfortunate. Staff will review the 2025 version and incorporate on the next update. 4) Will bullet standards.
<b>1 General Standards</b>									
1-1	<a href="#">Utility Locations</a>	Mar. '13						1) Common Notes to DWGs: a) many drawings have partial file link shown - should they just be noted in a staff database? b) In section D above, it states deviations may be granted by PWD with evidence from Proj. Eng - all drawings basically have only City Engineer noted for deviations or to check with. Do DWGs need to be modified for consistency? I.e. DWC 1-1 note #9 vs. #5 & 8. 2) Per note #2 does 11' min between utilities need to be noted in dwg?	a) File paths removed b) The tension between the disclaimer and the drawings is beneficial to PW and the granting of variances. No revision. 2) Dimensions shown on dwg.
1-2	<a href="#">Utility Pedestal &amp; Trench Detail</a>	Feb. '09						1) Other dwgs state "cable" but this has "lv". 2) Does fiber optic need to be added too?	1) Changed to cable. 2) Yes. Might not make this review cycle.
1-3	<a href="#">Street Monument w/ Frame &amp; Cover</a>	Dec. '17						1) Should metal cap in top detail have 2" min as noted in Alt monument detail? 2) Add DWG in note #1?	1) No. Note 3 is sufficient. Note in Alt Mon. Detail is for specific installations. 2) Changed.
1-4	<a href="#">Back Fill - Class 'A'</a>	Mar. '13							
1-5	<a href="#">Back Fill - Class 'C'</a>	Mar. '13						1) In note #7, do dwgs 2-2, 2-2A, or 3-17 need to be referenced?	1) No.
1-6	<a href="#">Back Fill - Class 'D'</a>	Mar. '13							
1-7	<a href="#">Back Fill - Class 'F'</a>	Mar. '13						1) Note #6, does patch need to be a min 12" past trench? Does it need to be noted?	1) Yes. Asphalt often ends up undercut during excavation. No.
1-8	<a href="#">Identifying Tape Detail</a>	Feb. '16						1) Should the slope be called out as 1/1 for top of the trench with other soil classes and with detail of tracer line should it be excluded? 2) Should tracer wire be identified in detail? 3) Add fiberoptics?	1) 1:1 is generally best practice. Contractor is responsible for trench safety 2) No. 3) Next Update.
1-9	<a href="#">Concrete Street Repair Detail</a>	Feb. '09			<a href="#">Page 48 of PDF</a>				
1-10	<a href="#">Adjust Utilities</a>	Dec. '17						1) Concrete call out doesn't match 2018 inspection checklist in cover section. 2) Any req. for label or monuments like dwg 1-3?	1) Inspection Checklist lists concrete spec for sidewalk for SW and C&G. 2) No. "LABEL" allows flexibility.
1-11	<a href="#">Curbside Mailbox Detail</a>	Feb. '09			<a href="#">Page 48 of PDF</a>			1) Grammar - City listed twice under "Community Style" note.	1) Will remove one "City". :)
1-12	<a href="#">Clear Vision Area</a>	Feb. '09		<a href="#">Sec. 31-23</a>		<a href="#">Page 6 of PDF</a>			
1-13	<a href="#">Disabled Parking Sign Installation</a>	Feb. '09						1) Clarifying - 7' min or 60" min per ADA?	1) 7' clearance typical for the bottom of signs.
1-14	<a href="#">Disabled Parking Stalls</a>	Feb. '09							
1-15	<a href="#">Parking Layout Dimensions</a>	Feb. '09							
1-16	<a href="#">Parking Lot Section</a>	Feb. '09							
1-17	<a href="#">Sidewalk Drain Detail</a>	Mar-'24			<a href="#">Page 48 of PDF</a>				
NEW	<a href="#">Illumination Standards</a>	NEW			<a href="#">pg 35 of PDF / Appendix G</a>				

City website - <a href="#">Construction Standard Drawings</a> page		Pub. Date	Lewiston City Code	ADA Transition Plan (2020)	Lewiston Transp. Plan (2020)	<a href="#">Parklet Design Standards (2023)</a>	Thain Rd Corridor & Access Study (2024)	PWAC Feedback (6/26/25) <i>Cleaned up for legibility by HKelley; raw docs filed in Project #1 shared drive.</i>	Staff Comments
<b>2 Concrete Standards</b>									
2-1	<a href="#">Driveway Location &amp; Width Requirement</a>	Feb. '09						1) Is clear vision req to see backing out of a driveway?	1) Yes. It is also a safety factor in intersection function due to conflict points in travel paths.
2-2	<a href="#">Retention Swale</a>	Dec. '15						1) Is this only in designated areas? 9'6" from curb to sidewalk seems extreme & doesn't match existing neighborhoods? 2) When is this detail applied vs narrow - should there be a reference to the decision criteria? 3) In top detail, should curb be identified? 4) Inlet similar to 2-2A? 5) Note DWG instead of Detail? 6) Also in Note #5? In next detail should street curb be identified and aggregate base? Is the sidewalk supposed to be 2" above the curb instead of level? 7) Consistent language - is it layer round washed or washed river rock? 8) Any fabric req per SW? 9) Geotextile wording? 10) Does Note #7 need a detail?	1) Dependent on available ROW. 2) Dependent on available ROW. 3) Self-explanatory 4) Yes. Joints added. 5) Changed. 6) Will rely on X-ctn. 7) Should be washed round rock. Revised. 8) Fabric Spec Pending***** 9) Standardized between drawings. 10) Added Detail of Note 7.
2-2A	<a href="#">Narrow Retention Swale</a>	Dec. '15						1) Washed River Rock? See comment above. Same with DWG vs. Detail.	1) Revised to washed round rock.
2-3	<a href="#">Inlet Apron</a>	June '10							
2-4	<a href="#">Valley Gutter</a>	Feb. '09							
2-5	<a href="#">Detectable Warning for Pedestrian Access</a>	Sep. '10						1) Period at end of Note #2.	1) This detail will be replaced.
2-6	<a href="#">General Notes for All Types of Curb &amp; Gutter</a>	Feb. '13			<a href="#">Page 5 of PDF</a>			1) Note #1- Is an encroachment permit or ROW permit need as well or included? 2) #5 - In ALL DWGs, it is only noted 6" max lift. Do not see one with 6"-8" max noted. - curious..... 3) Also PWD noted vs City Engineer?	1) Permit(s) issued as part of review process. 2) 6"-8" is std lift size. Dwgs should match. 3) City Engineer appropriate.
2-7	<a href="#">High Back Curb and Rolled Curb &amp; Gutter</a>	Feb. '09		<a href="#">Page 48 of PDF</a>				1) Keep title "High Back Curb & Gutter"? It is noted in many other dwgs.	1) Dwg to be replaced.
2-8	<a href="#">Concrete Sidewalk</a>	Aug. '15						1) With sidewalk width change to 5', should there be a clause for matching existing neighborhood style & design? (w / wo buffer strip?) 2) Maybe have General Notes For All Sidewalks a separate page - 2-6A? Then a note can be added to others with "See DWG 2-6A for General Notes."?	1) Buffer strip is also stormwater swale. Each design is evaluated based on location during review. No note necessary. 2) Not in this revision.
2-9	<a href="#">Pedestrian Curb &amp; Type 'A' Curb</a>	Feb. '09							
2-10	<a href="#">Depressed Curb Section</a>	Mar. '09						1) Top detail notes #4 rebar placed min 2" from bottom of curb and detail has 3"?	1) Allows for some tolerance.
2-11	<a href="#">Sidewalk Ramp Type 1</a>	Sep. '10							
2-12	<a href="#">Sidewalk Ramp Type 2</a>	Mar. '17						1) Sidewalk ramp Type 1 calls out expansion joint size - Type 2 & 3 don't have it specified - should they?	1) No.
2-13	<a href="#">Sidewalk Ramp Type 3</a>	Sep. '10							
2-14	<a href="#">Single Perpendicular Ramp with Buffer</a>	Sep. '10							
2-15	<a href="#">Single Perpendicular Ramp without Buffer</a>	Sep. '10							
2-16	<a href="#">Driveway Approach - Split Apron Sidewalk</a>	Feb. '13							
2-17	<a href="#">Driveway Approach - Buffer Strip</a>	Feb. '13							
2-18	<a href="#">Driveway Approach - Jogged Sidewalk</a>	Jan. '18							
2-19	<a href="#">Driveway Approach - Wide Sidewalk</a>	Feb. '13							
2-20	<a href="#">Typical Two-way Arterial Street Driveway Approach</a>	Mar. '09				<a href="#">pg 20 of PDF</a>		1) Are crosswalk markings needed to avoid valley gutter? 2) ADA?	1) No. 2) No.
2-21	<a href="#">Large Lot Driveway Requirements</a>	Nov. '24						1) Note #2 - City Staff? Project Engineer?	1) City Staff.
2-22	<a href="#">Sidewalk Drain Detail</a>	Mar. '21						1) Note #1 - Proj or City Engineer? 2) #6 City Engineer or PWD?	1) City Engineer. 2) City Engineer.

City website - <a href="#">Construction Standard Drawings</a> page		Pub. Date	Lewiston City Code	ADA Transition Plan (2020)	Lewiston Transp. Plan (2020)	<a href="#">Parklet Design Standards (2023)</a>	Thain Rd Corridor & Access Study (2024)	PWAC Feedback (6/26/25) <i>Cleaned up for legibility by HKelley; raw docs filed in Project #1 shared drive.</i>	Staff Comments
<b>3 Street Standards</b>									
3-1	<a href="#">Private Shared Driveway; 30' Common Access Easement</a>	Mar. '17						1) Overall for Section 3 - Most of the DWGs - 1.a) Maybe create a General Notes DWG page to provide more room for details in DWGs? 1.b) Inconsistency of adding min/max in notes and in details - add for consistency to all DWGs? 1.c) Consistency with Grade Max or Max Grade and adding Grade? 1.d) Maybe add another detail or reference for tree placement in DWGs 1-1 / 1-2? 1.e) Does High Back Curb need to have a DWG referenced? And Gutter added to reference? AND does DWG need to be called out on Details? 1.f) Does Traffic Calming need to be FHWA or another Standard? 2) Note #3 - Do you have to add City Ord #? Are travel lanes min or max?	1.a) Excellent suggestion. Will look at incorporating into the next update. 1.b) Reviewed for suitability. 1.c) Reviewed for suitability. 1.d) 1-1 / 1-2 specify utility placement and trees would have to be outside of the infrastructure. 1.e) Not necessary. Not necessary. Not necessary. 1.f) FHWA and other guidelines followed if doing work outside of our details. 2) Ord. #s could be added. Travel lanes are specified at the correct widths.
3-2	<a href="#">Orchard Residential Street; Two 10' Travel Lanes</a>	Mar. '17							
3-3	<a href="#">Local Residential Street; Infiltration Drainage</a>	Jan. '15		<a href="#">Page 48 of PDF</a>				1) Is 7' in detail a park lane like DWG 3-7?	1) Note added.
3-4	<a href="#">Local Residential Street</a>	Jan. '25		<a href="#">Page 48 of PDF</a>				1) Do planting strips have a min width? 2) Is 7.5' in detail a park lane?	1) Dependent on a number of factors. 2) Notes added.
3-5	<a href="#">&lt; 500' Cul-De-Sac Roadway w/ Infiltration Drainage</a>	Mar. '17		<a href="#">Page 48 of PDF</a>				1) Should Narrow Retention Swale be noted as 5' min?	1) No.
3-6	<a href="#">&lt; 500' Cul-De-Sac Roadway</a>	Feb. '09		<a href="#">Page 48 of PDF</a>				1) Should Plant Strip be identified? Does it need a Note? Is there a min width?	1) No.
3-7	<a href="#">Cul-de-sac Design</a>	Feb. '09						1) Who or what criteria determines if parking is needed? 2) In top detail add Utility to Easement call out? 3) In bottom detail does Utility Easement need to be called out and no parking?	1) Type of development. 2) No change. 3) All requirements stay the same with offset bulb.
3-8	<a href="#">Residential Collector w/ Infiltration Drainage</a>	Feb. '09		<a href="#">Page 48 of PDF</a>					
3-9	<a href="#">Residential Collector</a>	Feb. '09		<a href="#">Page 48 of PDF</a>				1) Identify Plant Strip? And in notes?	1) No.
3-10	<a href="#">Paved Alley</a>	Feb. '09						1) Should Note #4 be required vs "may be needed"?	1) Yes. Note revised.
3-11	<a href="#">Local Commercial w/ Infiltration Drainage</a>	Feb. '09		<a href="#">Page 48 of PDF</a>				1) Note #11 - Does this need a Detail?	1) The note has been sufficient.
3-12	<a href="#">Local Commercial</a>	Feb. '09		<a href="#">Page 48 of PDF</a>				1) Identify & Note Plant Strip? 2) Note #11 - Does this need a Detail?	1) No. 2) The note is sufficient.
3-13	<a href="#">Industrial &amp; Commercial Collector</a>	Feb. '09		<a href="#">Page 48 of PDF</a>				1) Identify & Note Plant Strip? 2) Note #11 - Does this need a Detail?	1) No. 2) The note is sufficient.
3-14	<a href="#">Minor Arterial</a>	Feb. '09		<a href="#">Page 48 of PDF</a>				1) Identify & Note Plant Strip? 2) Note #11 - Does this need a Detail?	1) No. 2) The note is sufficient.
3-15	<a href="#">Corner Radius</a>	Feb. '09							
3-16	<a href="#">Typical Rural Roadway (within Impact Area)</a>	Feb. '09		<a href="#">Page 48 of PDF</a>				1) See previous comments on rock type and fab/geotextile. 2) Does Utility Easement DGW need to be referenced as before (or for General Notes)?	1) reviewed. 2) Rural Roadway.
3-17	<a href="#">Curb Extension &amp; Mid-block Choker (PG 1 &amp; PG 2)</a>	Nov. '12		<a href="#">Page 48 of PDF</a>				1) Consistency with DWGS numbers? maybe page 2 be 3-17A? 2) Page 1 - 2.a) Any parallel parking? 2.b) Does Curb Gutter DWG need to be noted on callout? 3) Page 2 - SW ref for non-woven geotextile?	1) Will review and standardize in next update. 2.a) No. 2.b) No. 3) ISPWC Type II Drainage Geotextile

	City website - <a href="#">Construction Standard Drawings</a> page	Pub. Date	Wastewater PT Stds Manual (2017)	Lewiston STMW Policy & Design Manual (2010)	PWAC Feedback (6/26/25) <i>Cleaned up for legibility by HKelley; raw docs filed in Project #1 shared drive.</i>	Staff Comments
<b>4 Water Standards</b>						
4-1	<a href="#">Potable &amp; Non-potable Waterline Separation</a>	Nov. '09			1) Font and capitalization in this section for consistency?	1) Detail to be removed.
4-2	<a href="#">Gate Valve Box w/ Assembly</a>	Nov. '09			1) Is it a locate wire or tracer wire? Locate identified as loop? Same different?	1) Tracer wire. Note revised.
4-3	<a href="#">Combination Blow Off &amp; Sampling Tap</a>	Nov. '09				
4-4	<a href="#">Thrust Blocking Detail</a>	Nov. '09				
4-5	Typical Water Meter or Utility Marker Location ( <a href="#">PG 1</a> & <a href="#">PG 2</a> )	Feb. '15			1) Maybe title bottom detail Sidewalk and underline title of both? 2) On page 2, reverse details for consistency or vice versa? 3) Maybe a box around the statement "Meter to be... -2032." on both pages?	1) Will try to do a larger overall cleanup of this dwg in the next update. 2) See previous. 3) See previous.
4-6	<a href="#">¾" Water Service Connection</a>	Dec. '24				
4-7	<a href="#">1" Water Service Connection</a>	Dec. '24				
4-8	<a href="#">1 ½" Water Service Connection</a>	Dec. '24				
4-9	<a href="#">2" Water Service Connection</a>	Dec. '24				
4-10	<a href="#">Double Check Valve Assembly for 2" or Smaller</a>	Feb. '15				
4-11	<a href="#">Reduced Pressure Backflow Assembly</a>	Feb. '15			1) Does bottom detail need 4" concrete pad noted, etc?	1) Left as is.
4-12	<a href="#">Fire Hydrant w/ Shut-off Valve</a>	Dec. '24			1) Is the No 12 AWG Copper Wire finder the Locate wire? Like DWG 4-2? 2) Do the Thrust Blocks need DWG 4-4 or DW-403 referenced? 3) Call out "See Valve.." be DGW instead of Detail AND should the Locate Wire be drawn on the valve?	1) Revised. 2) No. 3) Revised. Not for GVs on hydrant laterals.
4-13	<a href="#">Combination Air Release / Vacuum Valve</a>	NEW				
<b>5 Wastewater Standards</b>						
5-1	<a href="#">Wastewater Private Service Connection</a>	Dec. '10			1) In Section 5 - in various DWGs - Mastic Sealant is added or Grout crossed out and mastic written in. Revise where applicable for consistency? AND if a mastic sealant is used is it really referred as grouted? Curious on language.	1) Mastic and grout are different. Mastic is preferred by WW.
5-2	<a href="#">Service Tap Options</a>	Dec. '10				
5-3	<a href="#">Type 1 Manhole Details</a>	Dec. '24			1) Assume in the Standards somewhere a call out for mastic, gasket, caulking /sealant, to be non-asbestos material? 2) On top of detail, Grade Rings section identified as 1" min? Or 1' min?	1) Asbestos materials not available. 2) 1 inch
5-4	<a href="#">Type 1A Manhole (Shallow MH)</a>	Dec. '24			1) On top of detail, Grade Rings section identified as 1" min? Or 1' min?	1) 1 inch
5-5	<a href="#">Pressure Wastewater System Service Connection</a>	Dec. '10				
5-6	<a href="#">Concrete Manhole Collar</a>	Jan. '15				
5-7	<a href="#">Manhole Frame &amp; Cover</a>	Nov. '12			1) Double checking approval from PW Dept or PWD or City Engineer? 2) Note in #3 Grammatical - Shall be?	1) City Engineer. 2) Revised.
5-8	<a href="#">Manhole Channel Details</a>	Sept. '15				

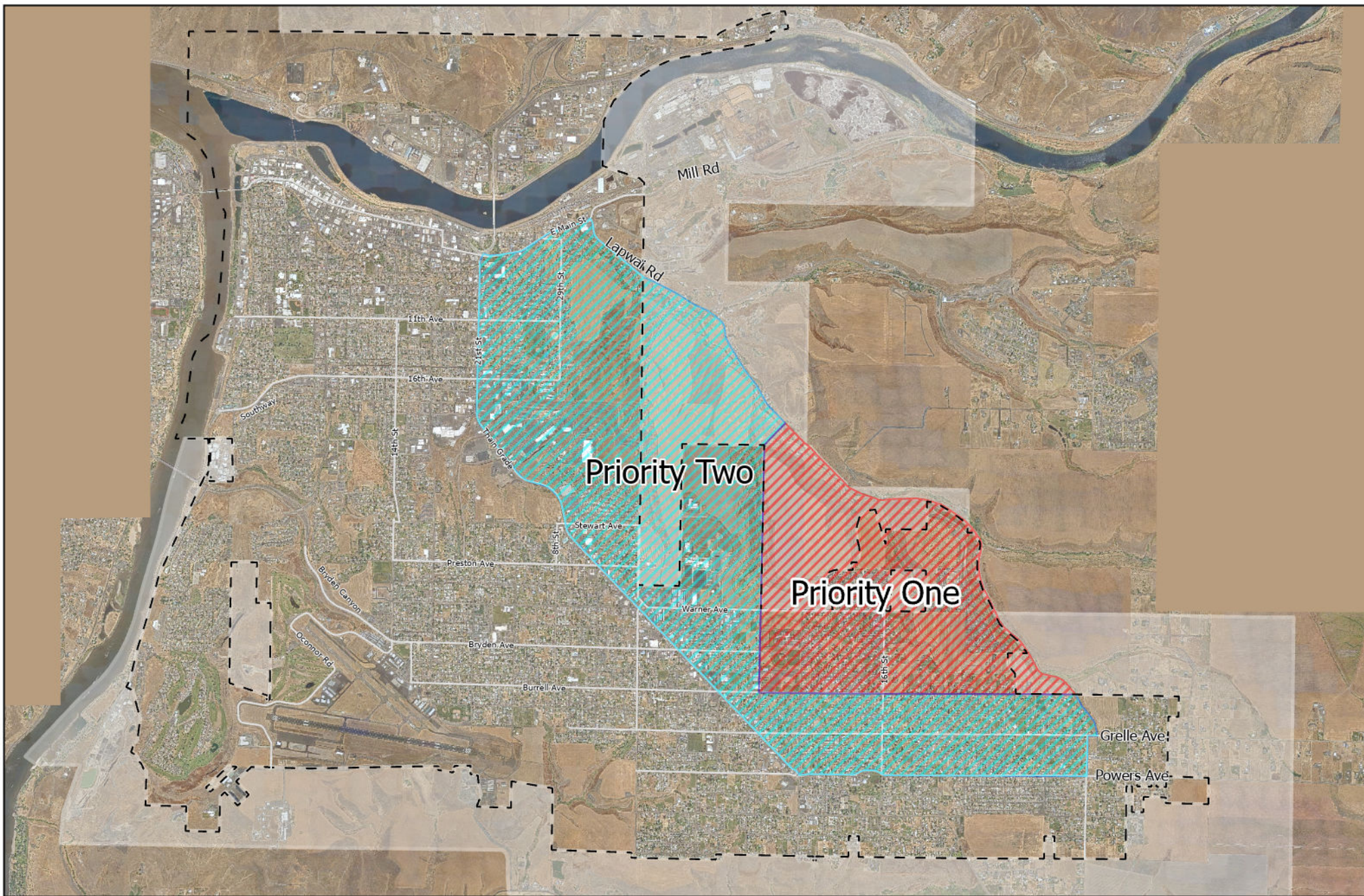
		Pub. Date	Wastewater PT Stds Manual (2017)	Lewiston STMW Policy & Design Manual (2010)	PWAC Feedback (6/26/25) <i>Cleaned up for legibility by HKelley; raw docs filed in Project #1 shared drive.</i>	Staff Comments
City website - <a href="#">Construction Standard Drawings</a> page						
<b>1 Industrial Pretreatment Section (IPS)</b>						
I-1	<a href="#">1000 Gallon Grease Interceptor</a>	June '10			1) Section I Overall: 1.a) Is there a for these separate based on flows expected? 1.b) Font and capitalization for consistency?	1.a) dependent on pretreatment requirements from DEQ and reviewed by Pretreatment Division for correctness. Not recorded here. 1.b) No revisions made for this update.
I-2	<a href="#">1000 Sand Oil / Water Separator</a>	June '10	<a href="#">pg 25 of PDF</a>			
I-3	<a href="#">1500 Gallon Grease Interceptor</a>	June '10				
I-4	<a href="#">1500 Sand Oil / Water Separator</a>	June '10	<a href="#">pg 25 of PDF</a>			
I-5	<a href="#">2000 Gallon Grease Interceptor</a>	June '10				
I-6	<a href="#">2000 Sand Oil / Water Separator</a>	June '10	<a href="#">pg 25 of PDF</a>			
I-7	<a href="#">2500 Gallon Grease Interceptor</a>	June '10				
I-8	<a href="#">2500 Sand Oil / Water Separator</a>	June '10	<a href="#">pg 25 of PDF</a>			
I-9	<a href="#">3000 Gallon Grease Interceptor</a>	June '10				
I-10	<a href="#">3000 Sand Oil / Water Separator</a>	June '10	<a href="#">pg 25 of PDF</a>			
I-11	<a href="#">Sand Trap</a>	June '10				
I-12	<a href="#">Interceptor / Separator Manhole Frame &amp; Cover</a>	June '10				
<b>6 Stormwater Standards</b>						
6-1	<a href="#">System General Notes</a>	Nov. '16			1) Along with video tape for record of construction, City should have contractor provide GPS data on top of the pipe for all 90's, coordinates every 50-100' of straight run to include in a "master" file. 2) Note #12 - Tracer wire? 3) As in Section 5 - in various DWGs - Mastic Sealant is added or Grout crossed out and mastic written in. Revise where applicable for consistency? AND if a mastic sealant is used is it really referred as grouted? Curious on language.	1) Data currently being collected. 2) Revised. 3) Mastic and grout are different. Mastic is preferred by WW.
6-2	<a href="#">Type 1 Manhole</a>	Dec. '24				
6-3	<a href="#">Type 1A (Shallow) Manhole</a>	Dec. '24			1) On top of detail, Grade Rings section identified as 1" min? Or 1' min? 2) Approval DWP or City Engineer?	1) 1 inch 2) City Engineer
6-4	<a href="#">Manhole Concrete Collar</a>	Dec. '24			1) Grout or mastic?	1) Mastic
6-5	<a href="#">Manhole Frame and Cover</a>	Dec. '10		<a href="#">pg 30 of PDF</a>	1) Change verify "storm" to ensure "storm" label	1) Revised to "PROVIDE"
6-6	<a href="#">General Catch Basin Notes</a>	Dec. '10			1) Grout or mastic?	1) Mastic. Revised.
6-7	<a href="#">Catch Basin Frame and Grate</a>	Nov. '13			1) Approval DWP or City Engineer? 2) Spell - Basins in Note #3.	1) City Engineer 2) Revised.
6-8	<a href="#">Type 1 Catch Basin</a>	Dec. '10			1) Approval DWP or City Engineer? 2) Spell - Basins in Note #3.	1) City Engineer 2) No correction needed
6-9	<a href="#">Type 1A (Shallow) Catch Basin and Reduction Slab</a>	Dec. '10			1) Approval DWP or City Engineer? 2) Spell - Basins in Note #3.	1) City Engineer 2) No correction needed
6-10	<a href="#">Standard Curb Drop Inlet (PG 1 &amp; PG 2)</a>	Dec. '10				
6-11	<a href="#">Special Curb Inlet Type '2'</a>	Dec. '10			1) Note #2 - Does it need to be a specific direction like #10 on DWG 2-6? Or #8 on DWG 2-8?	1) Not needed. No revision made.
6-12	<a href="#">Sidewalk Drain Detail</a>	Mar. '24				
<b>7 Solid Waste Standards</b>						
7-1	<a href="#">14'x10' Refuse Container Storage Area</a>	Oct. '10			1) Any stormwater standards that need to be included?	1) Not required on the dwg.
7-2	<a href="#">10'x10' Refuse Container Storage Area</a>	Oct. '10			1) Same as above.	1) Not required on the dwg.



## PUBLIC WORKS ADVISORY COMMISSION MEETING AGENDA ITEM SUMMARY

<p><b>ITEM TITLE</b> East Lewiston Network Analysis (ELNA) Steering Committee</p>	<p><b>AGENDA NO.</b> V.B. <b>AGENDA DATE:</b> August 28, 2025</p>
<p><b>ITEM SUMMARY (Background, Discussion, Key Points, Recommendations, etc.)</b></p> <p>The City has contracted Kittelson &amp; Associates, Inc. ("Kittelson") to perform a transportation network analysis of East Lewiston developed from input and participation from a steering committee.</p> <p>The project is set to develop a recommended concept layout for the transportation network. Key elements to be addressed include integration into and connectivity of the existing network, enhancements to the current infrastructure, future network planning, pedestrian safety, transit options, aesthetics, and utilities. The final recommendation(s) should encompass concepts for enhancing connectivity within the existing network and a strategic plan for future network development, ensuring the establishment of a robust and dependable transportation network in the area (see enclosed Priority Zone Map).</p> <p>On August 21, 2025, the Public Works Advisory Commission (PWAC) was notified of this steering committee and was notified of the opportunity for one (1) member to join the committee and attend the first meeting scheduled for August 28th. Regardless of participation, the City intends to bring the ELNA plan developed by the steering committee to PWAC for review and comment.</p>	
<p><b>BUDGET IMPACT (Identify any or all impacts this proposed action would have on the City budget and/or personnel resources)</b></p> <p>This project was appropriated in the Fiscal Year 2025 Capital Transportation budget in the amount of \$150,000.</p>	
<p><b>ACTION PROPOSED</b></p> <p>Staff is not requesting any action from the Commission on this item but will extend the opportunity to join the steering committee to one (1) interested member should the seat remain vacant at the time of this regular meeting; Council Liaisons will not be eligible to participate.</p>	

# City of Lewiston East Orchards Network Analysis Priority Zones



 Priority 1 Zone

 City Limit

 Priority 2 Zone

 Area City Impact

